

# Sentinel<sup>®</sup> LDK

## Migration Guide

Sentinel HASP to Sentinel LDK

All information herein is either public information or is the property of and owned solely by Gemalto NV. and/or its subsidiaries who shall have and keep the sole right to file patent applications or any other kind of intellectual property protection in connection with such information.

Nothing herein shall be construed as implying or granting to you any rights, by license, grant or otherwise, under any intellectual and/or industrial property rights of or concerning any of Gemalto's information.

This document can be used for informational, non-commercial, internal and personal use only provided that:

- The copyright notice below, the confidentiality and proprietary legend and this full warning notice appear in all copies.
- This document shall not be posted on any network computer or broadcast in any media and no modification of any part of this document shall be made.

Use for any other purpose is expressly prohibited and may result in severe civil and criminal liabilities.

The information contained in this document is provided "AS IS" without any warranty of any kind. Unless otherwise expressly agreed in writing, Gemalto makes no warranty as to the value or accuracy of information contained herein.

The document could include technical inaccuracies or typographical errors. Changes are periodically added to the information herein. Furthermore, Gemalto reserves the right to make any change or improvement in the specifications data, information, and the like described herein, at any time.

Gemalto hereby disclaims all warranties and conditions with regard to the information contained herein, including all implied warranties of merchantability, fitness for a particular purpose, title and non-infringement. In no event shall Gemalto be liable, whether in contract, tort or otherwise, for any indirect, special or consequential damages or any damages whatsoever including but not limited to damages resulting from loss of use, data, profits, revenues, or customers, arising out of or in connection with the use or performance of information contained in this document.

Gemalto does not and shall not warrant that this product will be resistant to all possible attacks and shall not incur, and disclaims, any liability in this respect. Even if each product is compliant with current security standards in force on the date of their design, security mechanisms' resistance necessarily evolves according to the state of the art in security and notably under the emergence of new attacks. Under no circumstances, shall Gemalto be held liable for any third party actions and in particular in case of any successful attack against systems or equipment incorporating Gemalto products. Gemalto disclaims any liability with respect to security for direct, indirect, incidental or consequential damages that result from any use of its products. It is further stressed that independent testing and verification by the person using the product is particularly encouraged, especially in any application in which defective, incorrect or insecure functioning could result in damage to persons or property, denial of service or loss of privacy.

© Gemalto 2018. All rights reserved. Gemalto, the Gemalto logo, are trademarks and service marks of Gemalto and are registered in certain countries.

**Product Version:** 7.9

**Document Part Number:** 000-000000-001, Rev. A

**Document Build:** 1812-3

**Release Date:** December 2018

# Contents

<b>Introduction.....</b>	<b>5</b>
About Sentinel LDK .....	5
About This Guide.....	5
Types of Protection Keys .....	6
Sentinel SL Keys.....	6
Sentinel HL Keys .....	6
Obtaining Support .....	7
<b>1 Migrating the Business Studio Server Database to Sentinel EMS Database .....</b>	<b>8</b>
Overview.....	8
Target Audience .....	8
Who Needs the Migration Process? .....	8
Who Does NOT Need the Migration Process? .....	8
Migration Paths for HASP SRM and Sentinel HASP .....	9
Summary of the Migration Process .....	9
Migrating a Large BSS Database.....	9
Changes at Customer Sites .....	10
Replacing the Sentinel HASP Activation Server .....	10
Method A: Modify the DNS Address .....	10
Method B: Change the Sentinel EMS Port Number .....	10
Additional Activation Methods.....	11
Working with Business Studio Server API .....	11
Which Data is Migrated? .....	12
Limitations and Workarounds.....	12
Distribution Channel Functionality .....	12
Reports .....	12
User Name.....	12
Customer Attributes .....	13
Miscellaneous Field Reassignments .....	13
Migration of Orders for HASP HL Max Micro Keys.....	14
Migration of Products That Do Not Contain Features.....	14
Migration of Completed Orders in the Demo Database.....	14
Performing a Trial Migration .....	14
Preparing for Migration.....	14
Estimate Time Required for Migration .....	14
Install SQL Studio Express and Back Up Your BSS Database .....	15
Install and Back Up Sentinel EMS.....	15
Set Up Sentinel LDK Data Migration Tool .....	15
Determine Batch Codes to be Migrated .....	16
Ensure That Sentinel EMS and BSS Database Services are Active.....	16
Ensure That the Required Master Keys are Connected.....	16
Back Up Sentinel EMS Database and BSS Database (Optional) .....	16

Migrating the BSS Database .....	17
Run the Sentinel LDK Data Migration Tool.....	17
Reintroduce the Master Keys .....	20
Verifying the Success of the Migration Process.....	20
Stopping the SQL Service for the BSS Database.....	21
Migrating Backend Systems That Use BSS API.....	21
Performing BSS and Sentinel EMS Database Rollback in Case of Failure .....	21
<b>2 Implementing the Business Studio Server API for Sentinel EMS .....</b>	<b>22</b>
Overview.....	22
Prerequisites.....	22
Functionality Changes .....	22
AddProductsToOrder Method.....	22
InsertCustomer Method .....	23
Retrieving Orders Based on Order ID.....	23
Retrieving Customers Based on Customer ID.....	23
Other Changes to BSS API Functions.....	24
Setting Up Business Studio Server API for Sentinel EMS.....	24
As an ASP.NET SOAP Web Service.....	24
Local (As a .NET DLL).....	27
<b>APPENDIX A Working With the Sentinel EMS Web Interface.....</b>	<b>29</b>
<b>APPENDIX B Troubleshooting.....</b>	<b>31</b>
TCP/IP Access Is Not Enabled for the BSS Database .....	31
The Master Wizard Returns Error Code 850, 852, or 857 .....	33
Migration Tool Fails to Back Up BSS Database or EMS Database .....	34
Migration Tool Freezes During the Pre-migration Process.....	34
BSS API for EMS Fails to Generate Log Files .....	35
<b>APPENDIX C Replace Obsolete Certificate .....</b>	<b>36</b>
Before you begin .....	36
Enable SSL (HTTPS) in Sentinel EMS .....	36
<b>APPENDIX D Modify Product Key Validation .....</b>	<b>37</b>

# Introduction

## About Sentinel LDK

Sentinel<sup>®</sup> LDK is a Software Digital Rights Management (DRM) solution that delivers strong copy protection, protection for Intellectual Property, and secure and flexible licensing. Sentinel LDK is an all-in-one Software DRM solution that enables you to choose a hardware- or software-based protection key, based on business considerations. Sentinel LDK software engineering and business processes are completely separate to ensure:

- Effective and efficient product development
- Quick time to market
- Immediate addressing of customer and market needs
- Comprehensive support throughout the software product's protection and licensing life cycle

The level of protection for your software is determined by the locking type you choose—hardware-based or software-based. Sentinel LDK hardware-based protection, which utilizes Sentinel HL keys, provides the safest and strongest level of protection.

## About This Guide

This guide is intended for the following types of software vendors:

- Vendors who currently use the (Sentinel HASP) Business Studio Server database to manage orders and licenses for Sentinel HASP. This guide describes how to migrate to the Sentinel EMS database and Sentinel LDK. For more information, see [“Migrating the Business Studio Server Database to Sentinel EMS Database”](#) on page 8.
- Vendors who currently use the Sentinel HASP Business Studio Server API. You can implement a modified version of the Business Studio API that allows your CRM and ERP applications to access the Sentinel EMS database using existing Business Studio API function calls. This avoids the need to convert your applications to use Sentinel Web Services. For more information, see [“Implementing the Business Studio Server API for Sentinel EMS”](#) on page 22.



Sentinel LDK introduces the *Sentinel License Generation API*. This API provides an alternative to working with Sentinel EMS. Sentinel License Generation API provides access to the power and flexibility of Sentinel protection keys without the need to install the full Sentinel EMS system. (You can use Sentinel LDK ToolBox to examine the API functions, create license templates, and to generate protection keys.)

There are several disadvantages to working with Sentinel License Generation API. The API does not support a database and does not support automated online activation. Vendors who use this API should develop an alternative method to store resultant states and C2V files for easy updates.

---

## Types of Protection Keys

---

This section describes the types of protection keys that are available for Sentinel LDK.

### Sentinel SL Keys

The following types of Sentinel SL keys are available in Sentinel LDK:

- Sentinel SL Legacy keys

These are the Sentinel SL keys that existed in Sentinel HASP until now. These keys can continue to be used without upgrading the Run-time Environment on the end user's computer. However, these keys are not compatible with new functionality introduced in Sentinel LDK such as the rehosting of a protection key to a different computer by the end user.

When you use Sentinel LDK to perform any type of update to a Sentinel SL Legacy key on an end user's computer, the key is automatically upgraded to a Sentinel SL AdminMode key - unless you specify otherwise.

- Sentinel SL AdminMode keys

These are a more advanced model of the Sentinel SL key. These keys are compatible with more advanced functionality in Sentinel LDK such as the rehosting of a protection key to a different computer by the end user. However, these keys require later versions of the Run-time Environment.

- Sentinel SL UserMode keys

This is a new type of SL key that does not require the presence of the Run-time Environment. Certain limitations apply to this type of key. The security provided by Sentinel SL UserMode keys is not as strong as that provided by SL AdminMode keys. SL UserMode keys do not support concurrency.

### Sentinel HL Keys

The following types of Sentinel HL keys are available, replacing the HASP HL keys that were provided until now:

- Sentinel HL (HASP configuration) keys

These keys are fully compatible with existing HASP HL keys and with older generations of HASP keys. These keys can work with your existing API libraries and Run-time Environment, and you can work with your current backend environment. These keys can be upgraded at the customer site to Sentinel HL (Driverless configuration) keys and can thus provide all the benefits provided by the Driverless keys. For information on upgrading Sentinel HL (HASP configuration) keys to the Driverless configuration, see the *Sentinel LDK Software Protection and Licensing Guide*.

- Sentinel HL (Driverless configuration) keys

These keys make use of HID drivers (included in the Windows operating system) instead of Gemalto drivers. These keys can be used without installing the Runtime Environment. To use these keys, your protected application must include the Licensing API libraries from the current version of Sentinel LDK, and you must be working with the backend from the current version of Sentinel LDK.

Vendors who are currently working with Sentinel HASP (or HASP SRM) HL keys have the following options:

- Remain with their current (Business Studio Server) back end, Run-time Environment and Run-time API libraries, and order Sentinel HL (HASP configuration) keys.
- Migrate to Sentinel LDK (as described in this migration guide), but order Sentinel HL (HASP configuration) keys. It is not necessary to replace their current API libraries or Run-time Environment.

- Migrate to Sentinel LDK (as described in this migration guide), and order Sentinel HL (Driverless configuration) keys. It is necessary in this case to replace their current API libraries and Run-time Environment.

## Obtaining Support

---

You can contact us using any of the following options:

**Business Contacts** - To find the nearest office or distributor, use the following URL:  
<https://sentinel.gemalto.com/contact-us-sm/>

### Technical Support

To obtain assistance in using Gemalto products, feel free to contact our Technical Support team:

- Customer Support Portal (preferred):
  - <https://supportportal.gemalto.com/csm?id=sentinel>
- Phone:
  - AMER: 800-545-6608 (US toll free), International: +1-410-931-7520
  - EMEA/APAC: <https://supportportal.gemalto.com/csm?id=sentinel>  
⇒ Click "Contact us"
- E-mail (only if you cannot submit the technical issue via the portal)
  - [technical.support@gemalto.com](mailto:technical.support@gemalto.com)

**Downloads** – To download installers and other updated components using this URL:  
<http://sentinel.gemalto.com/technical-support-sm/>

# 1

## Migrating the Business Studio Server Database to Sentinel EMS Database

### Overview

---

Sentinel EMS introduces a new database that is different from the database used by Sentinel HASP.

The Sentinel LDK Data Migration Tool migrates the data from an existing Sentinel HASP Business Studio Server database (*BSS database*) to a Sentinel EMS database.

Using this tool, you can handle the transition from Sentinel HASP BSS to Sentinel EMS with a relatively small effort. Wherever possible, the Data Migration Tool creates required new entities automatically or converts existing entities as required.

This section describes how to use the Sentinel LDK Data Migration Tool to perform this process.



The migration process is not reversible. No procedure is provided to migrate data from the Sentinel EMS database to the Sentinel HASP BSS database.

---

### Target Audience

---

#### Who Needs the Migration Process?

You may require the migration process if you are currently working with HASP SRM or Sentinel HASP, and you want to advance to the current version of Sentinel LDK.

(For vendors who require Language Packs for Sentinel EMS Vendor Portal and Sentinel LDK Vendor Tools: Language Packs will be made available several months after the current version of Sentinel LDK is released. For more information, contact your Gemalto sales representative.)

#### Who Does NOT Need the Migration Process?

You do not need the migration process if any of the following describe your situation:

- You use only HL Basic keys.
- You do not use Business Studio Server.
- You do not need the information contained in the Business Studio database.

In these cases, simply install Sentinel LDK on a different machine and start to use it.



## Migration Paths for HASP SRM and Sentinel HASP

---

This section describes the paths for migrating from earlier versions of HASP SRM and Sentinel HASP to Sentinel LDK.

- To migrate from Sentinel HASP v.5.0, v.5.10 or v.5.12:
  - Follow the procedures in this migration guide.
- To migrate from HASP SRM v.3.x or v.4.x:
  - First upgrade to Sentinel HASP 5.12. Refer to the *Sentinel HASP v.5.12 Installation Guide* for information on how to upgrade from earlier versions of HASP SRM.
  - After upgrading to Sentinel HASP v.5.12, follow the procedures in this migration guide.

## Summary of the Migration Process

---

The migration process consists of the sequence of procedures that follows. Each of these procedures is describes in this migration guide.

1. Install SQL Server Management Studio Express and back up your BSS database
2. Install Sentinel EMS and back up the Sentinel EMS database.
3. Set up Sentinel EMS Data Migration Tool.
4. Select the Batch Codes to be migrated.
5. Review the limitations and workarounds. Determine which issues will require corrective actions. If necessary, perform pre-migration modifications to the Business Studio Server database.
6. In parallel, if you work with Business Studio Server API, prepare modifications to your current ERP and CRM systems to work with Business Studio Server API for Sentinel EMS.
7. Perform a trial migration. Review the results to ensure that you are satisfied with the migrated Sentinel EMS database.
8. When you are satisfied with the migration process, perform the migration of your production database:
  - a. (If you use the Sentinel HASP Activation API to activate licenses online) Disconnect the Activation Server from the Internet.
  - b. Migrate your Business Studio Server database to the Sentinel EMS database. Reintroduce your Master keys.
  - c. Verify the success of the migration.
  - d. Enable Product activation.
9. Migrate the backend systems that use Business Studio Server API.

## Migrating a Large BSS Database

---

To migrate a large BSS database, be sure to install the appropriate edition of Microsoft SQL Server:

- Microsoft SQL Server 2014 Express Edition database size is limited to 10 GB.
- Microsoft SQL Server Standard and Enterprise Editions have much larger database size limit.

## Changes at Customer Sites

---

If you work with HASP SL licenses, you must ensure that customers who receive new or updated HASP SL keys install Sentinel LDK Run-time Environment v.6.23 or later.

Once the Run-time Environment v.6.23 or later is installed, HASP SL keys that were created with Sentinel HASP Business Studio will appear in the Sentinel Admin Control Center as "SL-Legacy" keys. Any SL-Legacy key for which you issue an update using Sentinel LDK can be optionally changed to an "SL-AdminMode" key.

For information on the different types of HASP SL keys used in Sentinel LDK, see the *Sentinel LDK Software Protection and Licensing Guide*.

## Replacing the Sentinel HASP Activation Server

---



You can skip this section if you do not use online activation or if you only use HL keys.

---

If you currently use the Sentinel HASP Activation API to activate licenses online, you must plan for a period of downtime, followed by a changeover from the Sentinel HASP Activation Server to Sentinel EMS.

The change from Sentinel HASP Activation Server to Sentinel EMS is accomplished using one of the methods described in this section.

Note the following:

- If you are migrating from Sentinel HASP 5.0, you must replace the Business Studio Server certificate file as part of the migration process. For more information, see ["Replace Obsolete Certificate"](#) on page 36.
- If you have added an integrity check (using the Sentinel Activation API) to verify that the entered Product Key type is valid, see ["Modify Product Key Validation"](#) on page 37.

### Method A: Modify the DNS Address

*This method is suitable when you install the Sentinel EMS database on a different machine than the BSS database.*

The protected applications that you distribute to customers contain a URL that points to the Activation Server DNS address.

At the start of the migration process, disconnect the Activation Server machine from the internet so that customers do not perform activations during the migration.

At the end of the migration process, after you determine that the conversion was successful, modify the DNS address to point to the Sentinel EMS computer.

### Method B: Change the Sentinel EMS Port Number

*This method is suitable when you install the Sentinel EMS database on the same machine as the BSS database.*

By default, the protected applications that you distribute to customers communicate with the Activation Server using port 443.

Install Sentinel EMS on the machine that contains the Sentinel HASP Activation Server. The installation must be performed using the **Advanced** setup type, and you must select the **Use SSL** option in EMS Host Configuration. In addition, you must use a different port than the port used by Business Studio Server.

At the start of the migration process, disconnect the Activation Server machine from the internet so that customers do not perform activations during the migration.

At the end of the conversion process, after you determine that the conversion was successful, disable the Business Studio Server service. Modify Sentinel EMS to use the same port that was used for the Activation Server.

Restart Sentinel EMS. Reconnect the machine to the internet.

## Additional Activation Methods

Sentinel EMS provides additional methods to perform activation of a product:

- Sentinel EMS Customer Portal

The Sentinel EMS Customer Portal is a Web portal that your customers can access in order to activate trialware or regular Products. The customer logs in to the Customer Portal using a Product Key that you generate and provide through Sentinel EMS. The customer completes a registration form (if you require this) and then chooses the method to activate the Product. Online activation is completely automatic and locks the license to the local machine. Offline activation enables the customer to download a utility that can be used to activate the license manually on a different machine.

- Sentinel EMS Web Services

This is an API that you can use to programmatically call services to perform functions in Sentinel EMS.

You can implement one of these methods as part of the migration process or at any later time.

## Working with Business Studio Server API

---



You can skip this section if you do not work with Business Studio Server API.

---

If you currently use the Business Studio Server API to perform functions in Sentinel HASP, note that Sentinel LDK provides a comparable web services interface to perform actions in Sentinel EMS.

However, to protect your investment in your current ERP and CRM systems and provide backwards compatibility, Sentinel LDK provides Business Studio Server API for Sentinel EMS. This is an updated version of Business Studio Server API that translates API function calls into the equivalent Sentinel EMS web services. Thus, after migration to Sentinel EMS, you can continue to use your existing backend systems with practically no modification.

Note that certain Business Studio Server API function calls are not supported or may require some modification.

Before you undertake the migration of your BSS database to Sentinel EMS, you must be ready to implement Business Studio Server API for Sentinel EMS in your backend systems. This is necessary so that your backend systems will be ready to work with the Sentinel EMS database as soon as the migration is completed.

For more information, see “Implementing the Business Studio Server API for Sentinel EMS” on page 22”.

## Which Data is Migrated?

---

By default, each entity that exists in the BSS database will be migrated to the Sentinel EMS database. (You can limit the Batch Codes for which data is migrated. See “[Determine Batch Codes to be Migrated](#)” on page 16.)

You can run the Data Migration Tool more than once for a given set of databases. However, in subsequent executions of the Migration Tool, only items that do not already exist in the Sentinel EMS database will be migrated. Thus, for example:

- A Feature that has been migrated to the Sentinel EMS database will not be migrated a second time even if the Feature was modified in the BSS database after the first migration.
- Given that both the following are true for a given user account:
  - The user account is associated with two Batch Codes.
  - The user account was migrated together with data for the first Batch Code.

The user account is not migrated a second time if data for the second Batch Code is migrated in a separate execution of the Migration Tool. If the user account was modified between the two executions of the Migration Tool, the modifications will not be present in the Sentinel EMS database.

## Limitations and Workarounds

---

While Sentinel EMS provides significant advantages over Business Studio Server, some functionality that exists in Business Studio Server is not present in Sentinel EMS. This section describes these limitations and any available workarounds.

### Distribution Channel Functionality

The Distribution Channel functionality that exists in Sentinel HASP is not supported in Sentinel LDK. Distribution Channel users will be migrated to Sentinel EMS as “disabled” and can be enabled manually in Sentinel EMS. However, Sentinel EMS does not place any restrictions on the users based on Distribution Channel Products. If these users are enabled, they will have access to all Products and to Entitlements for all Products that are a part of the vendor’s Batch Code.

### Reports

Sentinel EMS does not provide the same business intelligence reports that exist in Business Studio. (Note, however, that you can define custom reports in Sentinel EMS.)

### User Name

In Sentinel HASP, a Business Studio user name can contain the characters “-”, “&”, and space. A Sentinel EMS user name cannot contain these characters. Therefore, any of these characters in a user name is converted to “\_”.

A Sentinel EMS user must have an email address. If a Business Studio user does not have an email address, the Migration Tool assigns the email address ***userName@needs.email.com*** to the migrated Sentinel EMS user.

## Customer Attributes

The Migration Tool converts all customers from the BSS database to customers of type **Company** in Sentinel EMS. The value from the **Name** field in BSS is migrated to the **Company Name** field in Sentinel EMS.

**E-mail** address and **Contact Name** must always be provided together in Sentinel EMS, and **E-mail** address must be unique. These requirements do not exist in Sentinel HASP. Therefore, if either of these does not exist in the BSS database, or if the **E-mail** address is not unique, the Migration Tool places whichever information is available in the **Description** field in the Sentinel EMS database.

The table that follows indicates how the **Name**, **E-mail** and **Contact Person** fields from the BSS database are migrated to the Sentinel EMS database.

Business Studio Server (BSS) Database			Sentinel EMS Database For all migrated customers: (Customer) Type = Company				
(Customer) Name Field	(Customer) E-mail Field	Contact Person Field	Company Name Field	Contact E-mail Field	Contact Name Field	Description Field	
Unique or Duplicate	None	None	(Customer) Name from BSS	None	None		
		Provided		None	None	Contact Person: <i>BSS Contact Person</i>	
	Unique	None		E-mail from BSS	(Customer) Name from BSS		
		Provided		E-mail from BSS	Contact Person from BSS		
	Duplicate	None		None	None	None	Duplicate Email: <i>BSS Email</i>
		Provided		None	None	None	Duplicate Email: <i>BSS Email</i> Contact Person: <i>BSS Contact Person</i>

## Miscellaneous Field Reassignments

Most data fields from the BSS database are migrated to fields with equivalent names in the Sentinel EMS database.

Exceptions are listed in the table that follows.

BSS Database Field	Sentinel EMS Database Field	Notes
(Order) <b>Order ID</b>	(Entitlement) <b>Ref ID 2</b>	After migration, the field value in Sentinel EMS is: <i>HASP_OrderID_originalValue</i>
(Customer) <b>Customer ID</b>	(Customer) <b>CRM ID</b>	After migration, the field value in Sentinel EMS is: <i>HASP_CustomerID_originalValue</i>
(Customer) <b>Street, City, Zip</b>	(Customer) <b>Street</b>	In Sentinel EMS, the values of the three fields are combined in the <b>Street</b> Field.
(User) Full Name	(User) Ref ID 1	
(User) Description	(User) Ref ID 2	

## Migration of Orders for HASP HL Max Micro Keys

Once an order in Business Studio has been associated with a HASP HL Max Micro key, the key will appear in the entitlement in Sentinel EMS as **HL-Max** instead of **HL-Max-Micro**.

(Note that the Max key and Max Micro key are functionally equivalent.)

## Migration of Products That Do Not Contain Features

It is possible for a Product to contain memory content for a protection key, but no Features. If a Product with no Features is migrated from the BSS database to Sentinel EMS, the Product will be assigned a new Product ID – it will not receive the original product ID.



This same behavior occurs when a Sentinel HL key that contains a Product with no Features is checked into a different BSS database – the Product is assigned a new Product ID.

---

## Migration of Completed Orders in the Demo Database

Data for completed orders that is installed with the Demo database as part of the Sentinel HASP installation process is, in part, not well-formed. As a result, if you choose to migrate the Demo database, it will not be possible in Sentinel EMS to download V2C files for completed orders that exist in the Demo database. However, for orders that you entered and completed yourself in the Demo database, no such limitation applies.

This issue has no bearing on your production database.

## Performing a Trial Migration

Gemalto has attempted to anticipate and handle any problems that may arise during the migration process. However, to ensure uninterrupted service for your production environment, Gemalto highly recommends that you perform a trial migration and validation of your BSS database in a test environment using the procedures described below. After you complete a trial migration process, perform the validation steps described later in this document (see “[Verifying the Success of the Migration Process](#)” on page 20).



The migration process modifies your BSS database. Do not perform the trial migration with your production BSS database.

---

As part of your trial migration, be sure to test your implementation of Business Studio Server API for Sentinel EMS (if you use Business Studio Server API in your current production environment).

After you are satisfied that the migration proceeds as expected and that you are prepared to handle any resulting changes, you are ready to perform migration for your production environment.

## Preparing for Migration

### Estimate Time Required for Migration

Various factors, such as the connection speed to the databases, affect the amount of time required for migration of the BSS database to Sentinel EMS.

The size of the BSS database is the primary factor that determines the amount of time required. The migration process requires approximately one hour for each gigabyte of data to be migrated.

### Install SQL Server Management Studio Express and Back Up Your BSS Database

If not already installed, download and install SQL Server 2008 Management Studio Express or later from the Microsoft website. If you have installed SQL Server 2005 Management Studio Express, uninstall it and then install SQL Server 2008 Management Studio Express. Upgrade to the 2008 version is *not* possible from the 2005 version.

Connect to the BSS database. Make a backup copy of the database.

### Install and Back Up Sentinel EMS

Install Sentinel EMS from the latest Sentinel LDK Installation Drive. Gemalto recommends that you install Sentinel EMS and Business Studio Server on different computers. Follow the installation instructions provided in the *Sentinel LDK Installation Guide*.



If you want to migrate data for the DEMOMA Batch Code from Sentinel HASP to Sentinel EMS, be sure that during Sentinel EMS installation, in the Sentinel EMS Database Configuration screen, you clear the **Fill Demo Data** check box for installing demo data.

---

If Sentinel EMS v.2.1 (from Sentinel LDK 6.0) is present on the computer where you will install the current version of Sentinel EMS, refer to the upgrade instructions in the *Installation Guide*.



Sentinel LDK Data Migration Tool provides a built-in function to back up the Sentinel EMS database. You can only use this function if the Sentinel EMS database is located on the computer where you run the Migration Tool.

### Set Up Sentinel LDK Data Migration Tool

1. Locate the following directory on the computer where Sentinel LDK Vendor Tools are installed:  
**%ProgramFiles(x86)%\Gemalto Sentinel\Sentinel LDK\VendorTools\Utilities\BusinessStudioServer-Migration\  
(For Windows x86, use %ProgramFiles%\...)**
2. Copy the **BusinessStudioServer-Migration** directory and all of its contents to the computer that contains Business Studio Server.



If your installation of Business Studio Server was split into separate installations of the Activation Server and Management Server, copy the **BusinessStudioServer-Migration** directory to the computer where the Management Server was installed.



3. Ensure that the version of Java Runtime Environment (JRE) on the computer where the Migration Tool will run is 1.7.0\_21 or later (up to JRE 8u171). You can download a compatible version of JRE from:

<http://www.oracle.com/technetwork/java/javase/archive-139210.html>

### Determine Batch Codes to be Migrated

If your BSS database contains data for several Batch Codes, then by default, the Migration Tool migrates the data for all Batch Codes to the Sentinel EMS database. (Data for the DEMOMA Batch Code is only migrated if you specifically request this in the Migration Tool.)

If you use multiple Batch Codes (besides DEMOMA) in your BSS database, and you want to migrate only selected Batch Codes to the Sentinel EMS database, do the following:

1. Create a text file named **vendors\_blacklist.cfg** in the directory that contains the Migration Tool on the Business Studio Server machine.
2. For each Batch Code that should *not* be migrated, add a line that contains the name of the Batch Code to the **vendors\_blacklist.cfg** file.

### Ensure That Sentinel EMS and BSS Database Services are Active

The SQL service for the BSS database must be active and accessible to the Migration Tool during the migration process. However, Sentinel HASP applications such as Business Studio or the Activation Server must not be in use.

The SQL service for the Sentinel EMS database must be active and accessible to the Migration Tool during the migration process.

### Ensure That the Required Master Keys are Connected

The Sentinel Master Key for each Batch Code that will be migrated must be connected to the Business Studio Server computer during the migration process. No Master key is required for the DEMOMA Batch Code or for any Batch Code in the Blacklist file.

### Back Up Sentinel EMS Database and BSS Database (Optional)

The Migration Tool can back up the BSS database or Sentinel EMS database (or both) for you during the migration process. However, this built-in backup functionality can only be used when the database is located on the computer where you run the Migration Tool (that is, on the Business Studio Server machine).

If either database is located on a remote computer, ensure that the database is backed up.



## Migrating the BSS Database

---



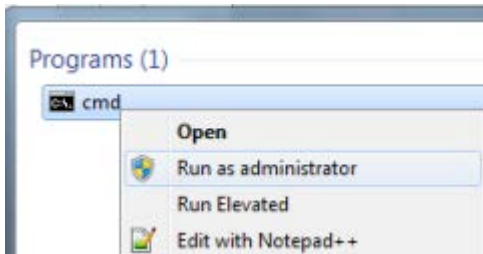
The migration process modifies both your BSS database and Sentinel EMS database. If the migration process fails, be sure to recover both databases from the backups that you create either before or during the migration process.

---

### Run the Sentinel LDK Data Migration Tool

Run the Sentinel LDK Data Migration Tool as follows:

1. In the Windows Search box, enter: **cmd.exe**
2. Right-click on the displayed **cmd.exe** program and select **Run as administrator**.



3. In the Command Line window, switch to the directory where you placed the Migration Tool on the Business Studio Server computer.
4. To launch the Migration Tool, enter: `Java -jar migrationTool.jar`

Note the following:

- Gemalto recommends that you save the console output to a log file. This log is useful if it is necessary to handle any issue that may occur during migration. To save console output to a log file, use this command to launch the migration tool:

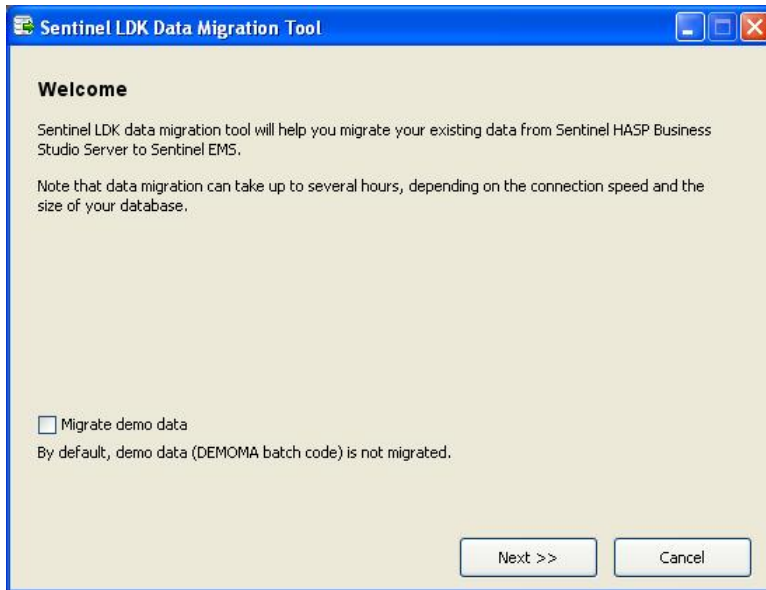
```
Java -jar migrationTool.jar > console.log 2>&1
```

You can change **console.log** to any other file name.

- If the size of the BSS database is greater than 500 MB, enter the following command to launch the Migration Tool with an increased heap size (and to save console output to a log file):

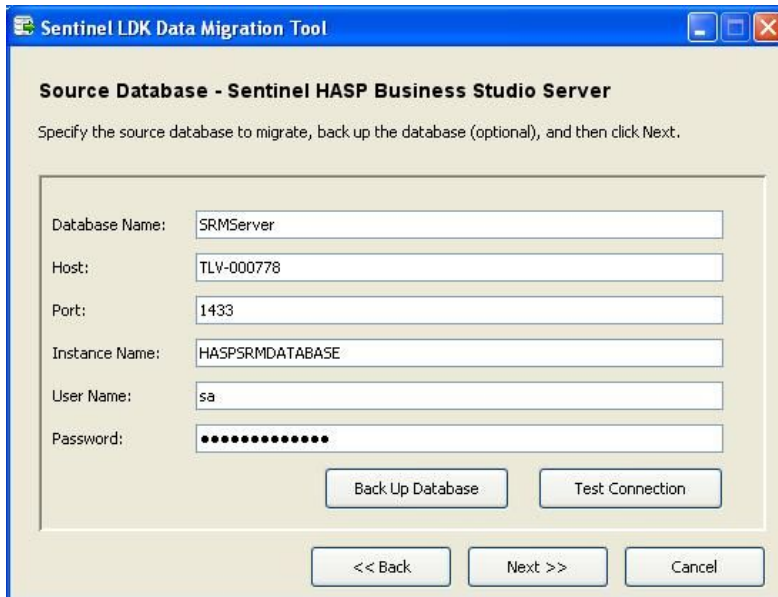
```
Java -Xms256m -Xmx1024m -jar migrationTool.jar > console.log 2>&1
```

The Migration Tool starts. The following screen is displayed:



5. If you want to migrate demo data (DEMOMA Batch Code) from the BSS database to the Sentinel EMS database, select the **Migrate demo data** check box.
6. Click **Next**.

A screen similar to the following is displayed:



The **User Name** field should contain the name of a user who has full administrator privileges for the BSS database.



If the **Port** field contains the value 0, this indicates that TCP/IP access for the BSS database is not enabled. To resolve this problem see “Troubleshooting” on page 31.

7. Click **Test Connection** to confirm that the Migration Tool can connect to the database.

- If you have not yet backed up the BSS database, you can click **Back Up Database** now to back it up. (This function can only be used if the BSS database is located on the local machine.)



If the database backup fails, refer to “Troubleshooting” on page 31.

- Click **Next** to continue.

A screen similar to the following is displayed:

- If Sentinel EMS is installed on a remote computer, enter the connection parameters. The **User Name** field should contain the name of a user who has full administrator privileges for the Sentinel EMS database. If necessary, modify firewall settings so that the Migration Tool can communicate with the Sentinel EMS database server.
- Click **Test Connection** to confirm that the Migration Tool can connect to the database.
- If you have not yet backed up the Sentinel EMS database, you can click **Back Up Database** now to back it up. (This function can only be used if the Sentinel EMS database is located on the local machine.)



If the database backup fails, refer to “Troubleshooting” on page 31.

- Click **Next** to continue. A message box is displayed, asking whether you want to restart the Business Studio Server service.
- Click **OK** to continue.

The migration process begins. This process may require several hours. Progress screens are displayed during this process.



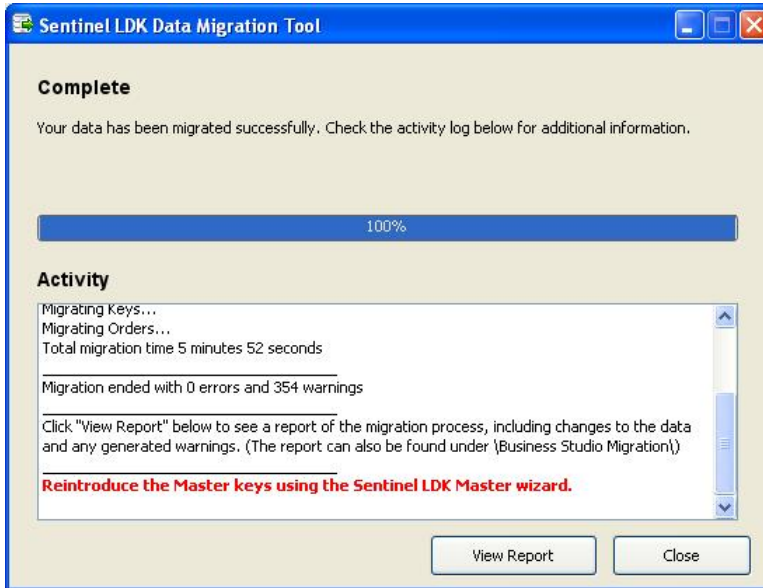
If the database preparation phase of the process freezes, refer to “Troubleshooting” on page 31.

Upon completion of the migration process:

- A detailed report of the migration process is displayed in a browser window. The complete contents of this report can also be found in:

**\\BusinessStudioServer-Migration\migration\_date\_time.html**

- A screen similar to the following is displayed:



You can click **View Report** to reopen the detailed report of the migration process.

## Reintroduce the Master Keys

The Sentinel Master key for each Batch Code that was migrated to Sentinel EMS must be reintroduced.

If Sentinel EMS is installed on different computer from Business Studio Server, move the relevant Master keys to the Sentinel EMS computer.

Perform the procedure for introducing Master keys in Sentinel EMS. (This must be done even if Business Studio Server and Sentinel EMS are installed on the same computer.) This procedure is described in the *Sentinel LDK Installation Guide*.



After the Master Wizard has downloaded all the libraries, the Wizard may seem to hang, and finally return the error code 850, 852, or 857. If this occurs, see “Troubleshooting” on page 31.

## Verifying the Success of the Migration Process

After completion of the migration process, confirm that the data from Sentinel HASP was successfully migrated to the Sentinel EMS database and that Sentinel EMS is handling the data correctly.

Perform the following activities:

- Review the contents of the migration report (described earlier). Determine if any adjustments are required to the migrated data or if any warning require your attention.

- Examine samples of the various entities (such as Features, Products, customers and entitlements) in Sentinel EMS and verify that the information displayed matches the data that exists in Sentinel HASP.
- Generate reports that are available in Sentinel EMS. Review the reports to ensure that the contents are consistent with the expected results.
- Perform sample transactions in Sentinel EMS and verify that the transactions complete as expected. Among the transaction you perform, Gemalto recommends that you do the following:
  - Download an existing update for a protection key
  - Generate a new update for an existing protection key.
  - Activate a migrated entitlement.
  - Perform a HASP update.

For assistance in performing the validation activities, see “Working With the Sentinel EMS Web Interface” on page 29.

## Stopping the SQL Service for the BSS Database

---

Once the migration process has completed, stop the SQL service for the BSS database to ensure that no further attempts are made to enter or modify data in the BSS database. Ensure that the Business Studio Server service is stopped and that its **Startup Type** is set to **Disabled**.

## Migrating Backend Systems That Use BSS API

---

For vendors that work with Business Studio Server API: When you are satisfied that your BSS database has been successfully migrated to the Sentinel EMS database, be sure to perform the necessary steps to prepare your CRM and ERP systems to use the Business Studio Server API for Sentinel EMS.

For more information, see “Implementing the Business Studio Server API for Sentinel EMS” on page 22.

## Performing BSS and Sentinel EMS Database Rollback in Case of Failure

---

The migration process changes both the BSS database and the Sentinel EMS database. If the migration from Sentinel HASP to Sentinel EMS does not succeed, perform the following steps for each database to roll back the database to its original state.

1. Stop the database server.
2. Restore the database.
3. Start the database server.

The migration process adds certain files in the directory containing the BSS database. These files can be ignored. They will not interfere when you run the migration process again after resolving the problems encountered.

## 2

# Implementing the Business Studio Server API for Sentinel EMS

## Overview

---

Sentinel LDK provides a Web Services interface to perform CMR or ERP actions in Sentinel EMS.

However, vendors who are working with the Sentinel HASP Business Studio Server API (*BSS API*) have typically invested extensive time and effort to integrate the API with their existing ERP and CRM infrastructure.

Business Studio Server API for Sentinel EMS (*BSS API for EMS*) allows you to take advantage of the benefits provided by Sentinel EMS while continuing to use the API calls in the BSS API. Thus, after migration to Sentinel LDK, you can continue to use your existing backend systems with a minimum of modification.



In your applications, you have the option of calling functions both in the BSS API for EMS and in Sentinel EMS Web Services. This enables you to take advantage of any new functionality that is not supported in the BSS API.

---

## Prerequisites

---

You must be using the version of Sentinel EMS that is provided with the latest version of Sentinel LDK.

Your backend applications must be compatible with Sentinel Business Studio Server API v.5.0 or later.

## Functionality Changes

---

This section describes changes in the behavior of certain methods in BSS API for EMS.

For more information regarding the methods described in this section, see the **business\_studio\_server\_api\_en-US.chm** help file. This can be found on the computer where Sentinel LDK Vendor Tools are installed, under:

**%ProgramFiles(x86)%\Gemalto Sentinel\Sentinel LDK\Legacy\API\BusinessStudioServer\**

(For Windows x86, use **%ProgramFiles%\...**)

### GetExecutableFromV2C

In Sentinel HASP BSS API, this method returns an executable binary.

In BSS API for EMS, this method returns a gzip binary.

Instructions for extracting the V2C content from the gzip binary are provided in *Sentinel EMS Web Service Guide*, in the topic “Update Protection Key.”

## AddProductsToOrder Method

In Sentinel HASP BSS API, this method adds new Products to an existing order.

In BSS API for EMS, this method replaces all the products in the entitlement with the Products contained in the *inProducts* array.

Thus, to add Products to an entitlement, the *inProducts* array must contain both the Products that exist in the entitlement and the Products to add to the entitlement.

Note that this change in the functionality enables you to use the *AddProductsToOrder* method to remove Products from an existing entitlement.

## InsertCustomer Method

In BSS API for EMS, this method will always insert a customer of type **Company** (rather than **Individual**). Additional parameters are mapped as follows:

Parameter in Sentinel HASP BSS API	Parameter is Mandatory	Parameter in BSS API for EMS
Address	No	Street
Contact	Mandatory if <b>Email</b> is provided.	Contact Information: First Name, Last Name, Middle Name
Email	Mandatory if <b>Contact</b> is provided.	Contact E-mail
Fax	No	Fax
Name	Yes	Company Name
Phone	No	Telephone
Reference	No	Ref ID
Status	No	Enabled: Yes or No
Zip Code	No	Zip Code

(If you want to insert a customer of type **Individual**, you can use the functions available in the Sentinel EMS Web Services.)

## Retrieving Orders Based on Order ID

The *GetAllOrders*, *GetNewOrders*, and *GetProductionOrders* methods search both **Ref ID 1** and **Ref ID 2** fields in entitlements for the value specified by the *inReference* parameter. These methods will retrieve orders for which either of these fields contains the specified value. However, the value for the **Ref ID 2** field cannot be retrieved using BSS API. After migration from Sentinel HASP to Sentinel EMS, the Order ID value is contained in the **Ref ID 2** field. (For more information, see “Miscellaneous Field Reassignments” on page 13.)

Therefore, when you use one of these methods to search for entitlements based on the value of Order ID, the method will appear to retrieve entitlements that do not contain the specified value, even though the value is present.

## Retrieving Customers Based on Customer ID

The *GetCustomers* method searches both **Ref ID** and **CRM ID** fields in customer records for the value specified by the *inReference* parameter. This method will retrieve customers for which either of these fields contains the specified value. However, the value for the **CRM ID** field cannot be retrieved using BSS API. After migration from

Sentinel HASP to Sentinel EMS, the customer ID value is contained in the **CRM ID** field. (For more information, see “Miscellaneous Field Reassignments” on page 13.)

Therefore, when you use this method to search for customers based on the value of customer ID, the method will appear to retrieve customers that do not contain the specified value, even though the value is present.

### Other Changes to BSS API Functions

The following items are not supported in BSS API for EMS:

- GetProvisionalOrders (method)
- ProduceProvisionalOrder (method)
- ClearClonedHaspSLKey (method)
- OrderType.PROVISIONAL (enum item)
- KeyOrders.FormatType (field)
- KeyOrders.FormatDate (field)

The changes below were implemented in BSS API for EMS:

- **EOL** state of entitlement in Sentinel EMS does not exist in Sentinel HASP. Therefore, EOL state is mapped to OrderStatus.None in BSS API for EMS.
- **ProductProvisionalOrders** method is not supported. Therefore, public HaspBssStatus GetProvisionalOrders(int inBatchID, string inReference, out Order[] outOrders) returns HaspBssStatus.HASP\_BA\_NO\_ORDERS in BSS API for EMS.
- **ProduceProvisionalOrder** method is not supported. Therefore, public HaspBssStatus ProduceProvisionalOrder(int inOrderID, out string outV2C) returns HaspBssStatus.HASP\_BA\_UNSPECIFIED in BSS API for EMS.
- **ClearClonedHaspSLKey** method is not supported. Therefore, public HaspBssStatus ClearClonedHaspSLKey(string inC2V, out string outV2C) returns HaspBssStatus.HASP\_BA\_UNSPECIFIED in BSS API for EMS.
- **GenerateFormatUpdateFile** method returns **HaspBssStatus.HASP\_BA\_INVALID\_INPUT** if the input C2V is empty (already formatted) in BSS API for EMS.

With Business Studio, this method would just generate another Format V2C file, even if the key was already empty/formatted. Currently, Sentinel EMS can generate Format files only against keys that contain personalized Products and Features and/or RAW Memory.

## Setting Up Business Studio Server API for Sentinel EMS

BSS API for EMS can be set up either as an ASP.NET SOAP web service or locally (as a .NET DLL).

### As an ASP.NET SOAP Web Service

You can install BSS API for EMS as a Web Service, either on the computer where you installed Sentinel EMS or on a separate computer in the same network.

This section describes the prerequisites and the procedure for performing this installation.



## Ensure Prerequisites

The computer on which you install BSS API for EMS as a Web Service must satisfy the following prerequisites:

- Windows Server 2008 or Windows 7 SP1
- Microsoft .NET Framework version 2.0 or later
- Windows Internet Information Services (IIS) version 5.0 or later
- Windows MSI Installer version 3.1 or later

When you launch the setup executable, the application checks to ensure that the computer satisfies the prerequisites.

- If the presence of the .NET Framework and MSI Installer is not detected, these components are automatically downloaded and installed.
- If the IIS component is not detected, you are prompted to install it manually, and the setup application terminates.

## Configure IIS

Depending on the operating system of the computer on which you plan to install BSS API for EMS, if you have installed IIS 7 or IIS 7.5, the following configuration is required to enable compatibility with the IIS 6 metabase:

- Windows Vista: Under **Programs & Features**, go to **IIS > Web Management Tools > IIS 6 Management Compatibility** and select **IIS Metabase & IIS 6 Configuration Compatibility**.
- Windows 7: Under **Programs & Features**, go to **Turn Windows features on or off > Internet Information Services > Web Management Tools > IIS 6 Management Compatibility** and select **IIS Metabase and IIS 6 configuration compatibility**.
- Windows 2008 Server:
  - a. Under **Programs & Features**, go to **Turn Windows features on or off**.
  - b. In the Server Manager screen - **Roles Summary** pane, click **Go to Roles > Add Roles**.
  - c. In the Add Roles wizard, click **Server Roles** in the navigation panel.
  - d. Select the **Web Server (IIS)** check box.
  - e. Click **Add Required Features**.
  - f. Click **Next**.
  - g. Click **Next**.
  - h. Select **IIS 6 Management Compatibility**.
  - i. Click **Next**.
  - j. Click **Install**.

## Install Business Studio Server API for Sentinel EMS

To install BSS API for EMS as a Web service:

1. Navigate to the following location on the computer where Sentinel LDK Vendor Tools are installed:  
**%ProgramFiles(x86)%\Gemalto Sentinel\Sentinel LDK\Legacy\API\BusinessStudioServer\WebSetup\**  
 (For Windows x86, use %ProgramFiles%\...)
2. Double-click **setup.exe**.

The BSS API for EMS installation wizard starts.

3. Proceed through the installation wizard. You can accept all defaults or make changes as required.
4. (Optional) Confirm that the Web service was installed correctly by accessing the following URL:

**http://localhost/BusinessAPI/BusinessAPIService.asmx**

If a page describing the Sentinel HASP Business Studio Server API is displayed, the Web Service was installed correctly.

5. In your application, be sure to modify the call to the *Initialize* method in the BSS API as necessary in order to connect to the Sentinel EMS server.

## Configure Use of SSL

By default, Sentinel EMS Service is configured to operate without using SSL. If you have set up Sentinel EMS Service to use SSL, you must also set up BSS API for EMS to use SSL.

You can set up BSS API for EMS to use SSL:

- By modifying the **useSSL** parameter in the IIS management console.
- By directly modifying the **useSSL** parameter in the **web.config** file.

### To modify the useSSL parameter in the IIS management console:

1. Start the Internet Information Services (IIS) management console using the method that is appropriate for your operating system.
2. Under the entry for the relevant computer, choose **Site** (or **Web Site**). Under **Default Web Site**, select **BusinessAPI > ASP.NET > BusinessAPI > Application Settings**. In the **Application Settings** properties, find the **UseSSL** key. Change the values for the key to **true** (to enable SSL).

### To modify the useSSL parameter directly in the web.config file:

1. Open the file **Web.config** in a text editor. This file is typically located in the directory:  
**%SystemDrive%/Inetpub/wwwroot/BusinessAPI/**
2. Locate the following line in the file:  
`<add key="useSSL" value="false" />`
3. To set up BSS API for EMS to use SSL, change the value from `false` to `true`.
4. Save the file.

## Configure Log File Generation (Optional)

By default, BSS API for EMS does not generate log file entries. You can enable generation of log file entries and set the verbosity level of the API as follows:

1. Open the file **Web.config** in a text editor. This file is typically located in the directory:  
**%SystemDrive%/Inetpub/wwwroot/BusinessAPI/**
2. Locate the following line in the file:

```
globalThreshold="Off"
```

3. Change the value `Off` to the desired log verbosity level. Possible log verbosity levels are:

`Debug` – Generate verbose log entries. This also includes messages from the `Error` and `Fatal` levels.

`Error` – Generate log entries for errors only. This also includes messages from the `Fatal` level.

`Fatal` – Generate log entries for fatal errors only.

4. Locate the following line in the file:

```
<logger name="*" minlevel="Fatal" writeTo="file" />
```

5. Change the value assigned to `minlevel` so that it matches the verbosity level assigned to `globalThreshold`.
6. Save the file.

(To disable generation of log entries, change just the value for `globalThreshold` back to `Off`.)



If BSS API for EMS fails to generate log files after it was properly configured, see “Troubleshooting” on page 31.

---

## Local (As a .NET DLL)

This section describes how to set up the BSS API as a .NET DLL.

1. Navigate to the following location on the computer where Sentinel LDK Vendor Tools are installed:  
**%ProgramFiles(x86)%\Gemalto Sentinel\Sentinel LDK\Legacy\API\BusinessStudioServer\bin\**  
 (For Windows x86, use **%ProgramFiles%\...**)
2. Copy the following files from the **bin** directory to your DLL directory (all the files must be in the same directory):
  - HaspBusinessStudioServer.dll
  - Nlog.dll
  - HaspBusinessStudioServer.dll.config
  - NLog.config
3. Ensure that **HaspBusinessStudioServer.dll** and **System.Web.Services.dll** are referenced in your .NET application.
4. If Sentinel EMS is configured to use SSL, modify **HaspBusinessStudioServer.dll.config** as follows:
  - a. Locate the following line in the file:  

```
<add key="useSSL" value="false" />
```
  - b. Change the value `false` to `true`.
  - c. Save the file.
5. By default, BSS API for EMS does not generate log file entries. You can enable generation of log file entries and set the verbosity level of the API. Modify **Nlog.config** as follows:
  - a. Locate the following line in the file:  

```
globalThreshold="Off"
```
  - b. Change the value `Off` to the desired log verbosity level. Possible log verbosity levels are:
    - `Debug` – Generate verbose log entries. This also includes messages from the `Error` and `Fatal` levels.
    - `Error` – Generate log entries for errors only. This also includes messages from the `Fatal` level.
    - `Fatal` – Generate log entries for fatal errors only.

- c. Locate the following line in the file:

```
<logger name="*" minlevel="Fatal" writeTo="file" />
```

- d. Change the value assigned to `minlevel` so that it matches the verbosity level assigned to `globalThreshold`.

- e. Save the file.

(To disable generation of log entries, change just the value for `globalThreshold` back to `Off`.)

6. In your application, be sure to modify the call to the **Initialize** method in the BSS API as necessary in order to connect to the Sentinel EMS server.
7. Recompile your .NET application.

## APPENDIX A

# Working With the Sentinel EMS Web Interface

Vendors who have been working with the Business Studio user interface may require some time to become familiar with the Sentinel EMS Web interface.

The Sentinel EMS Web interface includes a complete online help system. An overview of the Web interface is also provided in the *Sentinel LDK Software Protection and Licensing Guide*.

To assist you in becoming familiar with the Sentinel EMS Web interface, the table below lists the major activities in Business Studio and provides the equivalent activities in Sentinel EMS.

Business Studio Activity	Sentinel EMS Activity	Notes
Customers > Define New	Customers > New Customer	
Customers > Manage Activation of a Product	Entitlements > Product Keys > Edit	
Customers > Modify	Customers > Edit	
Customers > Obsolete	Customers > Disable	
Customers > Restore	Customers > Enable	
Development Tasks > Export Definition Data	Developer > Export Catalog Definitions	
Development Tasks > Generate Bundle of Provisional Products	Developer > Bundle Provisional Products	
Development Tasks > Generate Run-time Environment Installer	Developer > RTE Installer	
Development Tasks > RUS Branding	Developer > RUS Branding	
Distribution Channels	(Not supported)	
Manage Features > New	Catalog > Features > New Feature	
Manage Features > Obsolete	Catalog > Features > Action > Obsolete	
Manage Features > Open	Catalog > Features > Actions > Edit	
Manage Orders > Check in C2V	Entitlements > Check in C2V	
Manage Orders > Delete	Entitlements > Actions > Delete	
Manage Orders > New	Entitlements > New Entitlement	
Manage Orders > Open	Entitlements > Actions > Edit	
Manage Orders > Reopen (Change status to On Hold)	Entitlements > Actions > Reopen	
Manage Products > Delete	Catalog > Product > Actions > Delete	
Manage Products > Duplicate	Catalog > Product > Actions > Copy	
Manage Products > New	Catalog > Products > New Product	
Manage Products > New Cancellation	Catalog > Product > Actions > Cancellation	

<b>Business Studio Activity</b>	<b>Sentinel EMS Activity</b>	<b>Notes</b>
Manage Products > New Modification	Catalog > Product > Actions > Modification	
Manage Products > New Provisional	Catalog > Product > Actions > Provisional	
Manage Products > Obsolete	Catalog > Product > Actions > End of Life	
Manage Products > Open	Catalog > Product > Actions > Edit	
Manage Products > Restore	Catalog > Product > Actions > Complete	
Master Keys > Apply Licenses to Master Key	Administration > Master > Update Master	
Master Keys > Configure Email Notification	Administration > Master > E-mail Notification	
Master Keys > Editing Batch Code Properties	(Not supported)	
Master Keys > Introducing	Start Menu > Programs > Gemalto Sentinel > Sentinel LDK > Tools > Sentinel Master Wizard	
Master Keys > Order Licenses	Administration > Master > Collect Information	
Master Keys > View Master Key License Details	Administration > Master	Select the Master key to view.
Production > Check in C2V and Key data	Entitlements > Check In Key	
Production > Define Production Order	Entitlements > Actions > New	
Production > Edit Memory at order time	Entitlements > New Entitlement > Memory	
Production > Produce	Entitlements > Actions > Produce	
Production > Recycle Keys	Entitlements > Recycle	
Production > View	Entitlements	Select the Entitlement to view.
Reports > Generate Reports	Reports > Generate Report	
Reports > Scheduling	Reports > Scheduled Reports	
Users > Change Password (for another user)	Administration > Users > Edit > Change Password	
Users > Change Password (for your own password)	Change Password (from main screen)	
Users > Defining	Administration > Users > New User	
Users > Modifying	Administration > Users > Edit	

## APPENDIX B

# Troubleshooting

This appendix describes possible solutions to certain issues that may occur during the migration process or when attempting to work with BSS API for EMS.

The following issues are described:

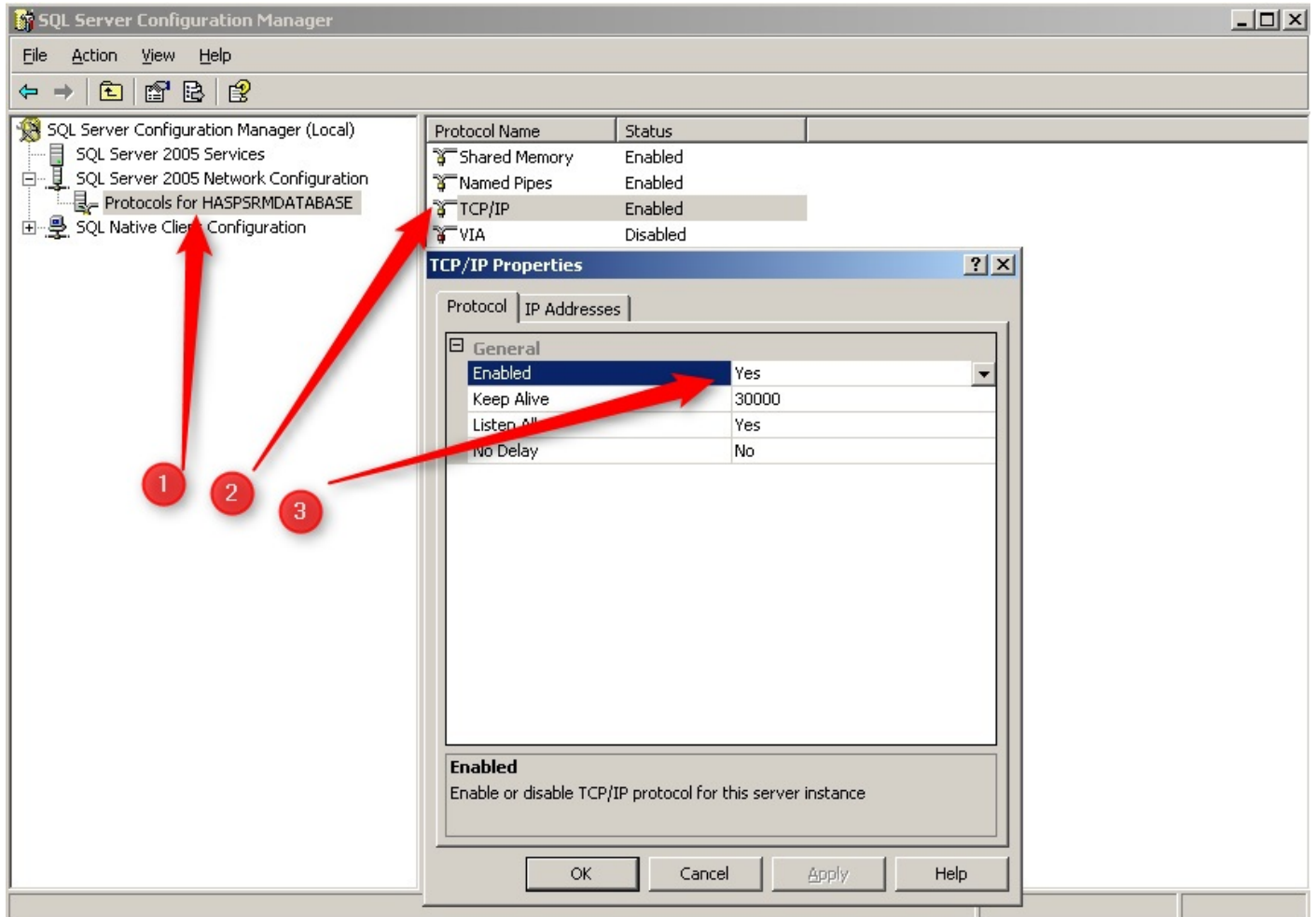
- TCP/IP Access Is Not Enabled for the BSS Database
- The Master Wizard Returns Error Code 850, 852, or 857
- Migration Tool Fails to Back Up BSS Database or EMS Database
- Migration Tool Freezes During the Pre-migration Process
- BSS API for EMS Fails to Generate Log Files

## TCP/IP Access Is Not Enabled for the BSS Database

When you start the Migration Tool: If the **Port** field contains the value 0 (as demonstrated below), this indicates that TCP/IP access for the BSS database is not enabled. A screen similar to the following is displayed:

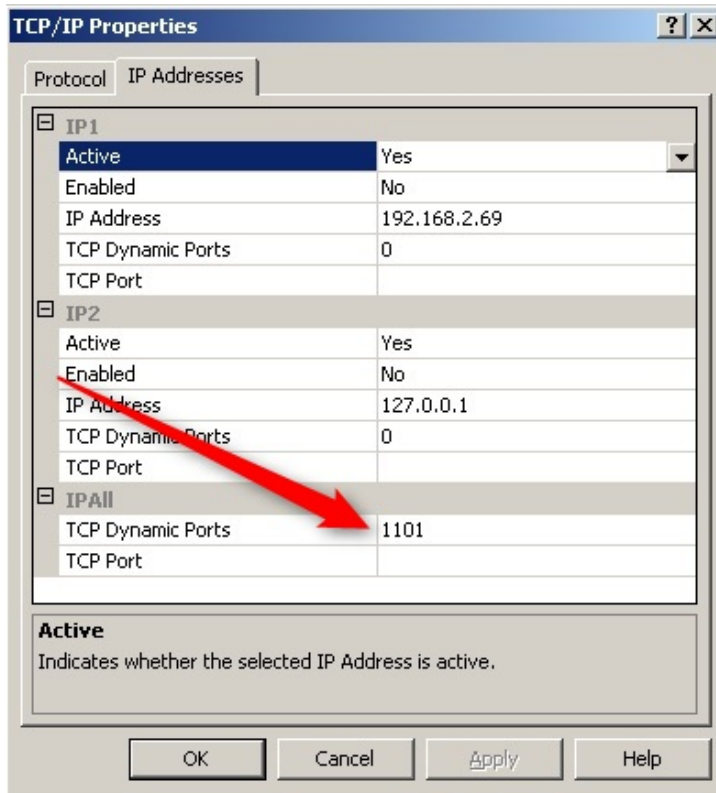
**To resolve this, enable TCP IP access for the BSS database as follows:**

1. Open the SQL 2005 Configuration Manager and enable TCP/IP as demonstrated in the screen below:
  - a. In the SQL Server Configuration Manager, select **Protocols for HASPSRMDATABASE** (1).
  - b. Under Protocol Name, select **TCP/IP** (2).
  - c. In the TCP/IP Properties dialog box, on the **Protocol** tabbed page, set **Enabled** (3) to **Yes**; then click **OK**.



2. Restart the service: SQL SERVER (HASPSRMDATABASE).
3. In the SQL Server Configuration Manager, redisplay the TCP/IP Properties dialog box as you did in step 1 above.
4. In the TCP/IP Properties dialog box, select the **IP Address** tabbed page.
5. Scroll down to find the correct port as shown below.





6. Enter this port in the Source Database window in the Migration Tool. The Migration Tool is now able to connect to the BSS database. Click the **Test Connection** button to verify the connection.

## The Master Wizard Returns Error Code 850, 852, or 857

When you run the Master Wizard to re-introduce the Master keys after you run the Migration Tool, the Wizard may seem to hang, and finally return the error code 850, 852, or 857. If this occurs, run the following SQL script (insert your Batch Code where indicated):

```
USE SRMServer;
update T_VENDOR
set Verified = 'True'
where BatchCode = 'yourBatchCode'
delete from T_VENDOR_FILE
where VendorID=(select VendorID from T_VENDOR where BatchCode = 'YOURBATCHCODE')
and VendorFileTypeID!=3
```

After the script completes, run the Master Wizard again. (The Wizard will run much faster the second time because your API has already been generated.)

## Migration Tool Fails to Back Up BSS Database or EMS Database

When you click the **Back up Database** button in the Migration Tool, the backup process may fail with the following message:

**The backup file cannot be saved to the specified location – access was denied. Choose a different location.**

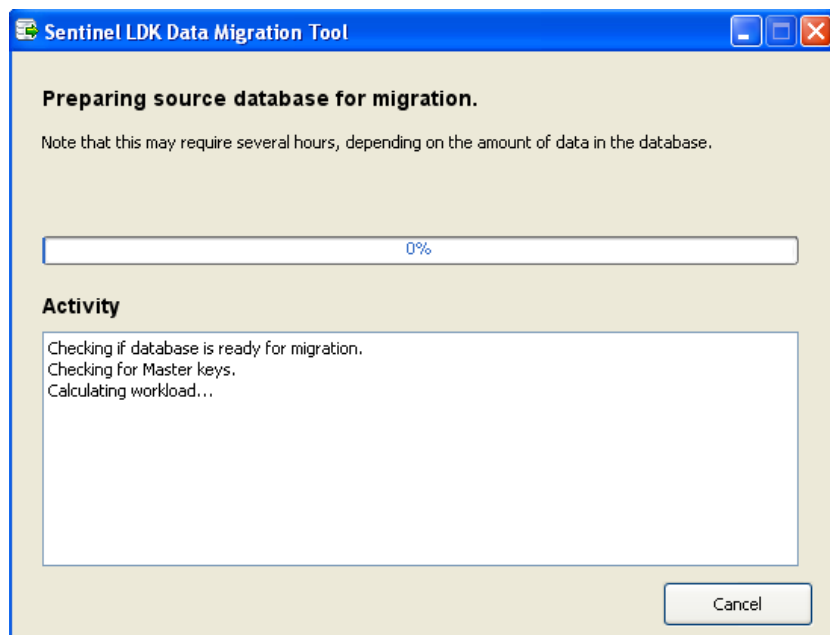
This error may occur if the SQL service that is used to back up the database does not have the required authorization to write to the directory chosen as the backup location.

### To resolve this problem:

1. Open the Services window on the local computer.
2. Display the Properties screen for the SQL Server service
3. On the Log On tabbed page, select **Log on as Local System account**.
4. Click **OK**.
5. Click the **Back Up Database** button again.

## Migration Tool Freezes During the Pre-migration Process

The Migration Tool may stop responding while it prepares the BSS database for migration. The following window is displayed for an extended period of time (approximately 20 minutes):



If this occurs, click **Cancel** and restart the Migration Tool. It is not necessary to back up the BSS database or Sentinel EMS database again at this point.

If the same problem continues to occur after one or two retries, clean up the BSS database as described below, and restart the process.

**To clean up the BSS database:**

1. Click **Cancel** to stop the Migration Tool.
2. Connect to the BSS database using SQL Server Management Studio and do the following:
  - a. Back up the BSS database.
  - b. Run the following scripts in the indicated order:
    - 1) **CleanKeyOrderForMigration.sql**
    - 2) **ModifyKeyOrderForMigration.sql**
    - 3) **CreateStatsAndIndexesForPerformance.sql**

These can be found on the Sentinel LDK Installation Drive, in the directory:

**\\Windows\Installed\VendorTools\Utilities\BusinessStudioServer-Migration\bss\Handler\HASPProductionManageMigration\sql\mssql**

3. Restart the Migration Tool.

## **BSS API for EMS Fails to Generate Log Files**

---

Under certain operating systems (such as Windows Vista, Windows 7, Windows 2008), BSS API for EMS may fail to generate log files even if properly configured.

This problem will occur if the user account under which the ASP.NET process runs does not have write access to the directory that contains the log files for the API.

To resolve this problem, ensure that the user account under which the ASP.NET process runs has the necessary write access.

By default, the log files are written to the directory where BSS API for EMS is installed. By default, this directory is: **%SystemDrive%\inetpub\wwwroot\BusinessAPI/**

If the user account for the ASP .NET process does not have write access to the directory above, you can assign a different directory to contain the log files.

**To change the directory to contain the BSS API for EMS log files:**

1. Open the file **Web.config** in a text editor. This file is typically located in the directory: **%SystemDrive%\inetpub\wwwroot\BusinessAPI/**
2. Locate the following line in the file:
 

```
fileName="{basedir}/logs/{shortdate}.log"
```
3. Replace `{basedir}` with the directory to contain the log files. For example, if you want the log files to be written to the subdirectory **logs** under **c:\temp**, change the line as follows:
 

```
fileName="c:\temp/logs/{shortdate}.log"
```
4. Save the file.
5. Ensure that the specified directory (in this example, **c:\temp**) exists.

## APPENDIX C

# Replace Obsolete Certificate

This appendix describes how to replace the Business Studio Server **keystore.HASP** certificate file in case the Activation API is from a version of Sentinel HASP earlier than v.5.10.

## Before you begin

---

Notify Gemalto Technical Support that you require the Business Studio Server **keystore.HASP** certificate file. After you receive the file, proceed with the remainder of this procedure.

## Enable SSL (HTTPS) in Sentinel EMS

---

1. From the Windows Start menu, go to: **Control Panel > Programs and Features**
2. Right-click **Sentinel LDK** and select **Change**. The Sentinel LDK Installation Wizard starts.
3. Select **Change Sentinel EMS Settings**.
4. Stop the Sentinel EMS Service (From the Start menu, select: **All Programs > Gemalto Sentinel > Sentinel EMS > Stop EMS Service**)
5. Place the **keystore.HASP** certificate file in the path:  
**%ProgramFiles(x86)%\Gemalto Sentinel\Sentinel EMS\EMSServer**  
(For Windows x86, use **%ProgramFiles%\...**)
6. Open the following file in a text editor:  
**%ProgramFiles(x86)%\Gemalto Sentinel\Sentinel EMS\EMSServer\conf\server.xml**  
(For Windows x86, open **%ProgramFiles%\...**)
7. Locate the **<Connector.../>** tag within **server.xml**. Change the tag as follows:
  - a. Set the password in the parameter **keystorePassSet** as follows: **keystorePass="aladdin"**
  - b. Set the certificate path as follows:  
**keystoreFile="\"%ProgramFiles(x86)%\Gemalto Sentinel\Sentinel LDK\EMSServer\keystore.HASP"**  
(For Windows x86, use **%ProgramFiles%\...**)
8. Start the Sentinel EMS Service (From the Start menu, select: **All Programs > Gemalto Sentinel > Sentinel EMS > Start EMS Service**)

## APPENDIX D

# Modify Product Key Validation

The format of the Product Key that is generated in Sentinel EMS is different from the format used in Sentinel HASP.

If you have added an integrity check (using Activation API) to verify that the entered Product Key type is valid, do one of the following:

- Change your source code logic so that it is compatible with the new Product Key format.
- In the Sentinel EMS configuration, change the Product Key format so that it satisfies the integrity check that you implemented. For more information, see “Customizing the Product Key” in the *Sentinel EMS Configuration Guide*.